



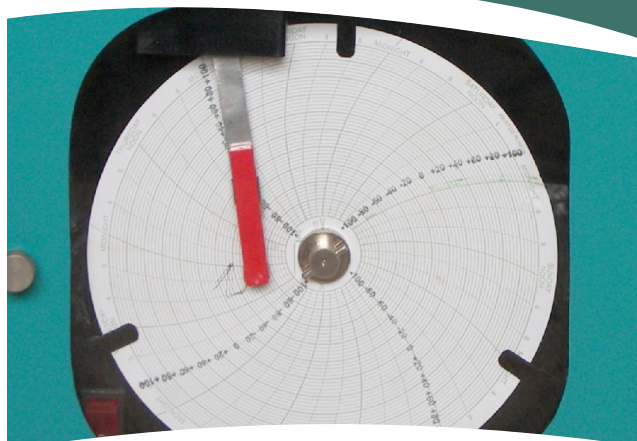
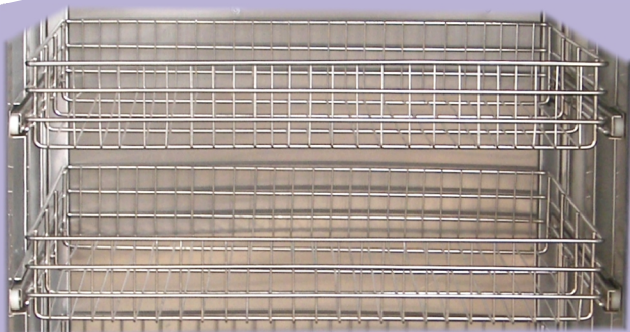
The LABTOP® micro controller based Plasma Freezers are designed for quick freezing and storing of plasma and related blood components at desired low temperature as low as -40°C . The system includes controller with digital temperature display, Temperature recorder, ON /OFF switch, Temperature alarm system with adjustable high / low alarm limits, includes audio visual alarm on temperature deviation.

Calibration:

The equipment is calibrated with the help of master calibrator, which is certified for its accuracy by Electronics Regional Testing Laboratory (ERTL West) Government of India recognized testing laboratory with traceable reference to National Physical Laboratories (NPL).

PLASMA FREEZERS

PLASMA FREEZERS



Special Features

- ✓ Micro-controller controls the internal temperature within $\pm 0.5^{\circ}\text{C}$
- ✓ Foamed in place CFC free PUF insulation ensures temperature stability and reduced energy consumption.
- ✓ Audio visual alarm when the temperature deviates from the set temperature.
- ✓ Specially designed Stainless steel plasma baskets ensure even temperature distribution.
- ✓ Display of set value and process value.
- ✓ Stainless steel PUF insulated inner door to minimize the temperature loss.

Cabinet Construction and Refrigeration System

High density CFC Free Poly Urethane Foam insulated cabinet with corrosion resistant stainless steel interior, white powder coated exterior finish, Keyed door lock for improved security with magnetic door gasket Open stainless steel plasma basket, Air-cooled hermetically sealed compressor.

Technical Specification:-

Cat No.	LPF 75V	LPF - 135V	LPF - 245V	LBF - 300V
Volume	90 Liters	170 Liters	290 Liters	325 Liters
Inside Dim (W x D x H)	42x38x57 cms	50x43x85 cms	58x50x102 cms	60x53x105 cms
External Dim (WxD x H)	55x60x105cms	65x58x138 cms	70x66x159 cms	73x71x163 cms
No. of basket	2, stainless steel	3, stainless steel	4, stainless steel	5, stainless steel
Temperature	$-40^{\circ}\text{C} - 35^{\circ}\text{C}$	$-40^{\circ}\text{C} - 35^{\circ}\text{C}$	$-40^{\circ}\text{C} - 35^{\circ}\text{C}$	$-40^{\circ}\text{C} - 35^{\circ}\text{C}$
Input Voltage	230 V AC	230 V AC	230 V AC	230 V AC
Recorder	7 days circular chart	7 days circular chart	7 days circular chart	7 days circular chart

Optional Accessories

- 1 RS-485 interface for multiple networking.
- 2 Multi channel with data logging system.
- 3 Mobile alert via GSM technology in case of system failure.
- 4 US FDA 21 CFR part 11 complaints web based communication software for data management.

SKYLAB INSTRUMENTS & ENGINEERING PVT. LTD.

M-7 & 8, Anand Mangal Ind. Estate, Survey No.: 70-B,
Opp. IPOL, Waliv Phata, Sativali Road,
Vasai (E), Dist - Thane-401 208, Maharashtra, INDIA.
Tel.: 91-250-2481431, 2481428 Fax : 91-250-2481505
e-mail : byjuskylab@vsnl.net www.skylabinstrument.com