

Digital Imaging and Analysis System:

Biosens 645

Biosens 645 Digital Imaging and Analysis System displays a state-of-the-art design. Space saving darkroom design makes it possible to work in daylight in a small space while protecting the user from UV irradiation.

The 12 million pixels digital camera is fully enclosed in the cabinet. The digital camera will capture the images and transfer the images to PC through USB connection automatically.

Biosens is also equipped with LED white light EPI illumination, while UV EPI illumination and white light screen are optional. There is an easy access door and a UV table that can be pulled out easily to allow visual examination of the gel and band extraction. The UV illumination and white illumination can be controlled by a touchpad on the top of the unit.

BioSens Gel Documentation System can meet the needs of routine work in research laboratories. Operating on a WINDOWS platform, the software that comes with BioSens system is easy to use and suited to simple, rapid “capture and print” applications. But it’s also sophisticated enough to allow for multiple-user, real time imaging, analysis and quantification, etc. Special features such as contrast and brightness setting, background control are also integrated.

The system is complete with transilluminator and 590nm filter. With a plate on the top, the filter is easy to replace. It comes with no PC, and the customer can connect the system to existing computer.

Features:

- Compact and light tight, with enclosed camera and lens
- High-resolution Digital Camera
- Long-life overhead LED white lighting
- System complete with transilluminator with 21x26cm filter
- Software for image capture and analysis

Applications:

- DNA/RNA Gels
- Protein Gels
- Ethidium Bromide, Coomassie Blue, Silver Stains
- SYBR Green, SYBR Gold, SYPRO Orange
- 1D Gel Analysis



Biosens 645

Specification

Camera	
Resolution	4000x3000 Pixels
Digitization	24 bits colour
Lens	6xOptical Zoom, 4x Digital
Aperture Range	F2.8 – F4.8
Exposure	1/2500—15s
CCD Chip Size	1/1.7"
Interface	USB
System	
System Size	41x55x43cm(WxHxD)
Power Supply	220V, 50/60Hz
Table Size	21x26cm
Standard Filter	590nm
Transillumination Wavelength	254/302/365nm
Options	
	<ul style="list-style-type: none">* UV EPI illumination* Choices of Filters Available* White light transilluminator* Dual wavelength UV transilluminator (instead of standard table, Factory Fixed)
Recommended PC system	
	Pentium IV, 256Meg Ram, CD-Rom drive, USB connection Windows 2000/XP

Shanghai Bio-Tech Co., Ltd

Room 501, 9th Huban Bldg

851 Quyang Road

Shanghai 200437, China

Tel : 86-21-65550736, 65558758, 65526582

Fax: 86-21-65522489

E-mail:info@shbiotech.com www.shbiotech.com

Gel Documentation Imaging System:

Biosens 700 Series

- Solution for routine laboratory work

Biosens 700 Gel Documentation Imaging System displays a state-of-the-art design. Space saving darkroom design makes it possible to work in daylight in a small space while protecting the user from UV irradiation.

The 8-bit monochrome CCD camera is fully enclosed in the cabinet. The camera will capture the images and transfer the images to PC through BNC connection.

Biosens is also equipped with LED white light EPI illumination, while UV EPI illumination and white light screen are optional. The UV illumination and white illumination can be controlled by a touchpad on the top of the unit. Zoom, Focus and Iris can also be controlled.



BioSens Gel Documentation System can meet the needs of routine work in research laboratories. Operating on a WINDOWS platform, the software that comes with BioSens system is easy to use and suited to simple, rapid “capture and print” applications. But it’s also sophisticated enough to allow for multiple-user, real time imaging, analysis and quantification, etc. Special features such as contrast and brightness setting, background control are also integrated.

The system is complete with transilluminator and 590nm filter. With a plate on the top, the filter is easy to replace. It comes with no PC, and the customer can connect the system to existing computer.

Features:

- Compact and light tight, with enclosed camera and lens
- 8-bit Monochrome CCD Camera
- 6xMotorized and software controlled zoom lens
- Long-life overhead LED white lighting
- System complete with transilluminator with 21x26cm filter
- Software for image capture and analysis

Applications:

- DNA/RNA Gels
- Protein Gels
- Ethidium Bromide, Coomassie Bule, Silver Stains
- SYBR Green, SYBR Gold, SYPRO Orange
- 1D Gel Analysis

Biosens 710/750

Specification

Camera Resolution Digitization Chip Size Lens Interface	752x582 Pixels 8 bits 1/2" 6xOptical Zoom BNC
System System Size Power Supply Table Size Standard Filter Transillumination Wavelength	41x55x43cm (WxHxD) 220V, 50/60Hz 21x26cm 590nm 254/312/365nm
Options	<ul style="list-style-type: none">* UV EPI illumination* LCD screen* Choices of Filters Available* White light transilluminator* Dual wavelength UV transilluminator (instead of standard table, Factory Fixed)
Recommended PC system	Pentium IV, 256Meg Ram CD-Rom drive USB connection Windows 2000/XP

Shanghai Bio-Tech Co., Ltd
Room 501, 9th Huban Bldg
851 Quyang Road
Shanghai, China 200437

Tel : 86-21-65550736, 65558758, 65526582

Fax: 86-21-65522489

E-mail: info@shbiotech.com www.shbiotech.com

Advanced Gel Imaging and Analysis system: Biosens 810

Biosens 810 Gel Imaging and Analysis System displays a state-of-the-art design. Space saving darkroom design makes it possible to work in daylight in a small space while protecting the user from UV irradiation.

The 10-bit/12-bit/14-bit monochrome CCD camera is fully enclosed in the cabinet. The camera will capture the images and transfer the images to PC through Firewire connection automatically.

Biosens is also equipped with LED white light EPI illumination, while UV EPI illumination and white light screen are optional. There is an easy access door and a UV table that can be pulled out easily to allow visual examination of the gel and band extraction. The UV illumination and white illumination can be controlled by a touchpad on the top of the unit.



BioSens Gel Documentation System can meet the needs of routine work in research laboratories. Operating on a WINDOWS platform, the software that comes with BioSens system is easy to use and suited to simple, rapid "capture and print" applications. But it's also sophisticated enough to allow for multiple-user, real time imaging, analysis and quantification, etc. Special features such as contrast and brightness setting, background control are also integrated.

The system is complete with transilluminator and 590nm filter. With a plate on the top, the filter is easy to replace. It comes with no PC, and the customer can connect the system to existing computer.

Features:

- Compact and light tight, with enclosed camera and lens
- 10bit / 12bit / 14bit Monochrome CCD Camera
- 6xMotorized and software controlled zoom lens
- Long-life overhead LED white lighting
- System complete with transilluminator with 21x26cm filter
- Software for image capture and analysis

Applications:

- DNA/RNA Gels
- Protein Gels
- Ethidium Bromide, Coomassie Bule, Silver Stains
- SYBR Green, SYBR Gold, SYPRO Orange
- 1D Gel Analysis

Biosens 810

Specification

Camera Resolution Digitization Chip Size Lens Interface	1.3 million 10 bits 1/2" – 2/3" 6xOptical Zoom / Scientific grade zoom Firewire
System System Size Power Supply Table Size Standard Filter Transillumination Wavelength	41x55x43cm(WxHxD) 220V, 50/60Hz 21x26cm 590nm 254/312/365nm
Options	<ul style="list-style-type: none">* UV EPI illumination* Choices of Filters Available* White light transilluminator* Dual wavelength UV transilluminator (instead of standard table, Factory Fixed)
Recommended PC system	Pentium IV, 256Meg Ram CD-Rom drive Windows 2000/ XP

Shanghai Bio-Tech Co., Ltd
Room 501, 9th Huban Bldg
851 Quyang Road
Shanghai, China 200437

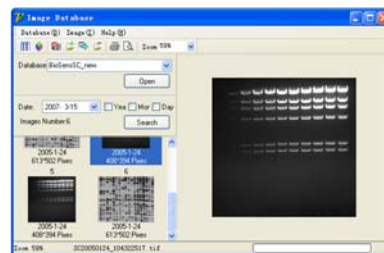
Tel : 86-21-65550736, 65558758, 65526582

Fax: 86-21-65522489

E-mail: info@shbiotech.com www.shbiotech.com

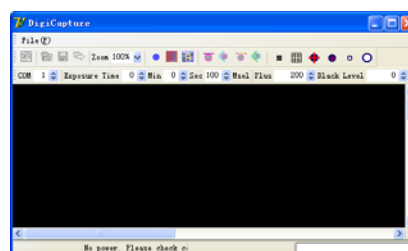
The software of Biosens Gel Imaging System

The software provides the most comprehensive set of image acquisition, enhancement, data management and analysis tools available.



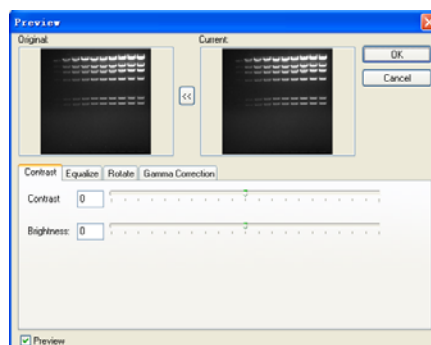
Easy Image Acquisition

- Real time full image display in Live Preview
- Easy control of the UV light and white light
- Easy control of the zoom, focus, aperture and exposure time



Powerful Image Edition

- Flip and rotate
- Positive/Negative function for viewing an "inverted" image
- Grayscale, 24bits RGB, blackwiththe function
- Contrast, brightness adjust and Gamma correction
- Filter function



Versatile Image Analysis

- Auto and manual detection of lane and band
- Lane and band adjusting
- Auto volume calculation
- Background subtraction
- Molecular weight calculation

